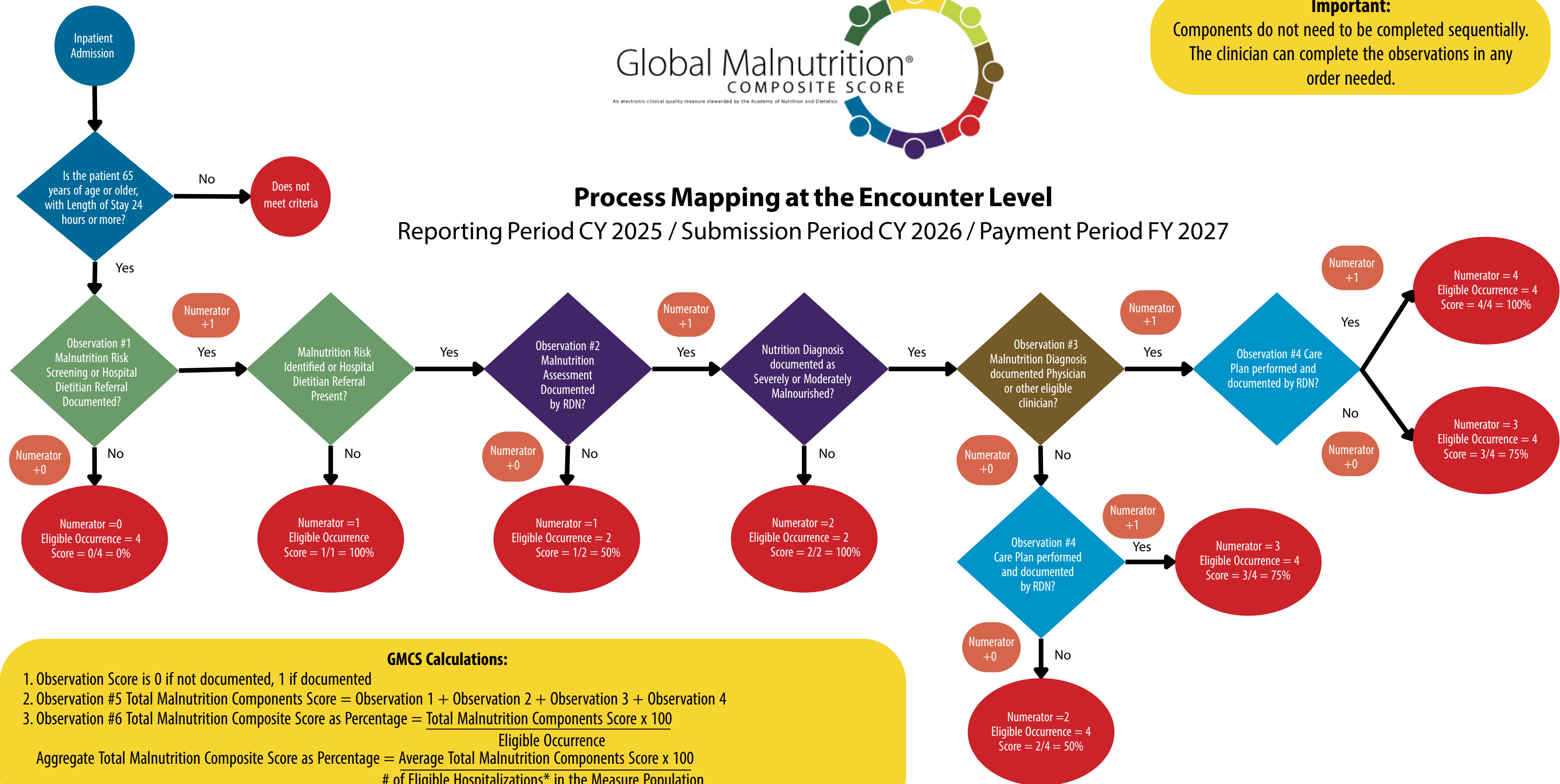




Important:
Components do not need to be completed sequentially.
The clinician can complete the observations in any order needed.

Process Mapping at the Encounter Level

Reporting Period CY 2025 / Submission Period CY 2026 / Payment Period FY 2027



*Eligible Hospitalizations are those classified as Inpatient encounters, that are 65 years of age or older on admission, with a length of stay of 24 hours or more